



**Control made simple**

Lynxus Commercial™

Wireless Network Controls for  
Smart Buildings

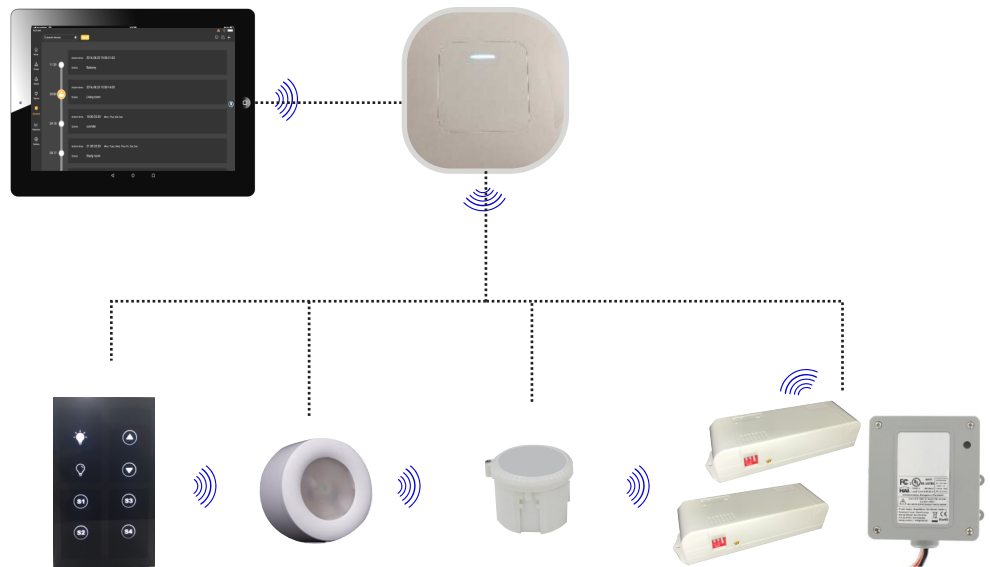
# Why Lynxus Commercial

## Customizable, features rich experience

**Lynxus Commercial™** Wireless Control System is simple to specify, install, setup and manage. Designed for commercial applications in spaces that seek a code compliant, energy saving solution without the complexity of traditional networked lighting management systems.

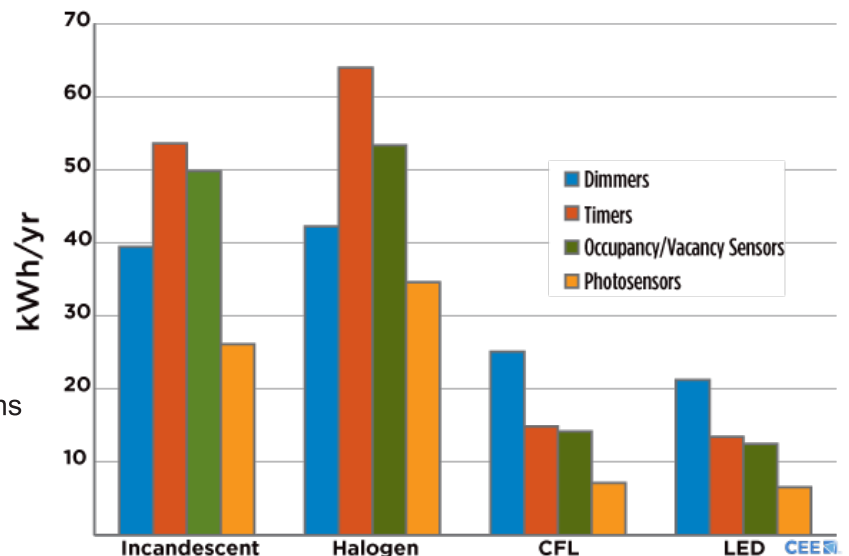
## The Lynxus Ecosystem

Although lighting control solutions have been proven to significantly reduce energy consumption, many parts of commercial building market have been hesitant due to high costs of necessary wiring, complexity of integration and compatibility. New wireless technologies are eliminating these concerns, while expanding the lighting control capabilities.



## The Smart Choice

- Save energy, Save money
- Code Compliant ASHRAE 90.1- IECC 2015
- Reduce consumption 50 to 75%
- Optimize fixture life
- Leverage Strategies
- Integrate into Building Management System
- Fully ungradable
- Open Standard compatible, multi systems





## Warehouse

With energy costs on the rise, facility managers are looking for ways to increase efficiency without losing light quality. No longer do we look for amount of light in the area but, quality of light at the given task.

- Create a safe environment for workers
- Decrease energy costs
- Support space changes
- Increase visibility
- Support daylight harvesting
- Easily configured and reconfigured
- Support HID - Fluorescent - LED

## Office

Create an atmosphere conducive to productivity and performance within an increasingly modular workforce. Color Tuning (CT) and Task Tuning (TT) have become increasingly popular for a simple reason, it works.

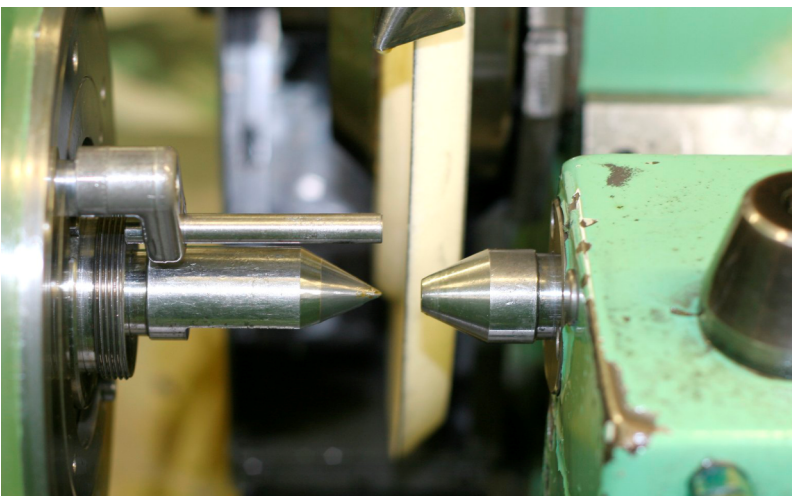
- Implement energy conservation measures
- Improve employee satisfaction with (CT)
- Light what is needed - (TT)
- Lighting where it's needed - Sensor Based
- Lighting when it's needed - Daylight Harvesting



## Manufacturing

OSHA has established guidelines in lighting, specifically in the minimum amount of lighting required for working areas and the safety standards. **Lynxus** allows you to:

- Supports OSHA Standards 1926.56
- Increase light where you need it
- Create a safer work environment
- Reduce glare and eye strain
- Support emergency backup systems
- Schedule only when needed
- Support HID - Fluorescent - LED



# The Lynxus Commercial System



The **ZBA-B003** is the intelligence point of **Lynxus Commercial**. The B003 is designed to control a space of up to 10,000 square feet and/or up to 140 end-nodes. With Silicon Labs 2017, it can also operate - Bluetooth Mesh- Thread and POE for ultimate control.



The **ZBA-E001** effortlessly controls 1:1 or 1: multi devices. With a 10A relay the **E001** also acts as a primary load controller. This 0-10V module boasts (2) independent sensor inputs along with (4) channel PWM for tunable white (CT) or color changing.



The **ZBA-PM01** operates much the same as the E001 with an added feature, Power Metering with in 2% accuracy. Control 1:1 or 1: multi devices. contains a 10A relay and also acts as a primary load controller. (2) independent sensor inputs and (4) channel PWM.



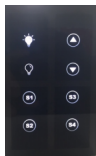
The **MC054V** gives seamless control when paired with the Lynxus App. Detection area, time delay and daylight threshold can be precisely set via **Lynxus Pro**. A wide detection area, range up to 16m in diameter and mounting height 15M Max. is excellent for warehouse high bays.



The **ODOP-SOW** is a self-contained daylight harvesting sensor functioning in 1-10V. Combined with the robustness of a **Lynxus** module it is Ideal for daylight harvesting



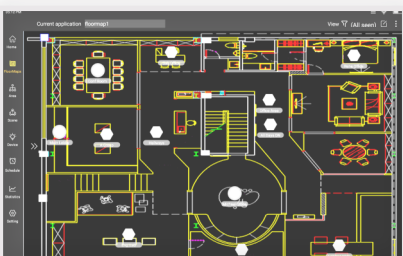
The **ZLC-003** is a highly reliable load controller in 20 and 30A. With simple install this unit can provide On/Off and 0-10V individual or group control. IP65 rated the ZLC-003 is UL Listed for mount to existing junction box or outside of fixture.



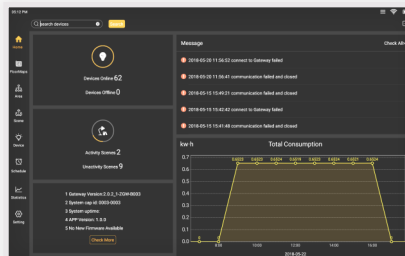
The **ZGW-S801** is a touch screen switch with an internal zigbee 3.0 gateway. The J-Box mounted configuration replaces standard wall switches to wirelessly communicate with the Lynxus Network. Powered by 120/277 the S801 is fully programable within the LynxPro App.

## Lynxus features:

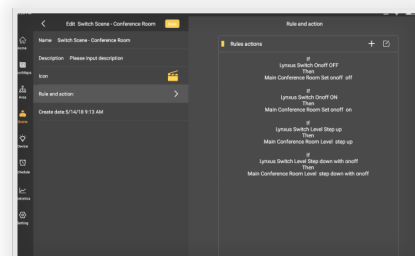
- Multi Gateway configuration for unlimited control
- Powerful control strategies including scheduling, task tuning, occupancy, daylight harvesting
- Reliable, secure, zigbee wireless mesh network
- Real-time, measurable Power Metering
- Open ADR integration
- Simple and intuitive local interface
- Integrates with (BMS) KNX - BACnet



Interactive Mapping with full Control



Statistical Data at a glance



Advanced Logic for flexibility

# Lighting & Control Solutions Strategies for the future

## Lighting where you need it, when you need it.






The **Lynxus Control Strategy** offers comprehensive, scalable and flexible lighting controls for commercial applications. Our products, programs, and services are **ASHRAE 90.1** and **IECC 2015**

## A simple approach to complete control - Lynxus Commercial™ simplify your life.

**Lynxus Commercial™** provides a standalone wireless control platform designed for non-residential space. Our code compliant, energy saving solution is both easy to install and simple to commission. From basic control to advanced feature rich scenes, Lynxus meets your lighting control strategy. Lynxus meets basic lighting control requirements based on ASHRAE 90.1 - IECC 2015 - Title 24 and is ideally suited for warehouse, office and commercial space where basic control is required.

Lynxus Commercial is simple to specify and easily commissioned. Using the Lynxus Pro App on any mobile device or tablet, installation crews can program your space with minimal interruptions.

Lynxus Commercial also protects your investment by offering an easily up-grade in both equipment and APP. With Lynxus, your controls are always forward and backward compatible in an open standard system.

-  **Automatic Dimming**
-  **Occupancy and vacancy sensing**
-  **Daylight harvesting**
-  **Scheduling**
-  **Power Metering**

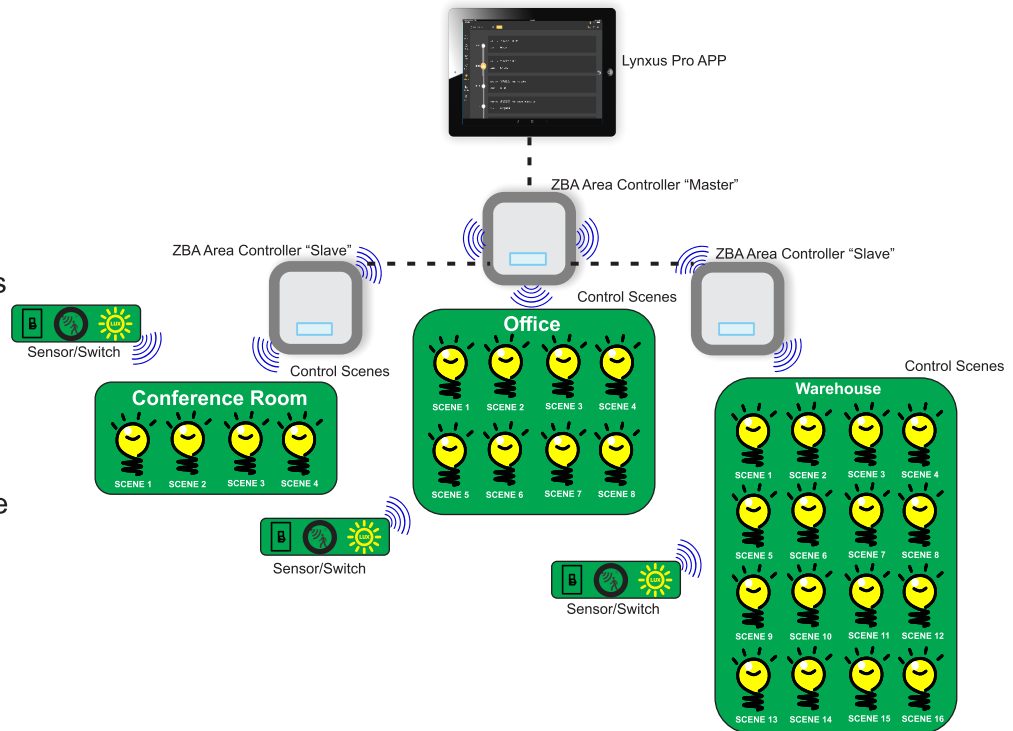
With a varied line of wireless products, Lynxus Technologies tailored a specific system to accommodate the commercial industry. Based on the Lynxus Pro App, and employing the proven ZBA module, we are proud to deliver **Lynxus Commercial**. Designed specifically for warehouse, office and manufacturing environments, Lynxus Commercial delivers proven, simplistic results to improve the bottom line and reach code compliance.

For more information on Lynxus Technologies visit [www.lynxus.com](http://www.lynxus.com)



# The Lynxus Ecosystem

Although lighting control solutions have been proven to significantly reduce energy consumption, many parts of commercial building market have been hesitant due to cost, complexity and applicability. New wireless technologies are eliminating these concerns, while expanding the lighting control capabilities.



For additional information on Lynxus Technologies go to [www.Lynxus.com](http://www.Lynxus.com) or visit [www.magtechind.com](http://www.magtechind.com) for additional information on our state of the art power supplies

**Lynxus Technologies**  
5625 S. Arville  
Suite A  
Las Vegas, NV 89118  
702-364-9998  
[Lynxus.com](http://Lynxus.com)

Lynxus Technologies is a Division of  
Magtech Industries Corporation  
[www.magtechind.com](http://www.magtechind.com)

**Lynxus Technologies**  
a div. of **Magtech Industries**