

Project Name:	
Type:	

WCU Series

Suitable for Wet location
Wireless Reporting Compatible

PRODUCT FEATURE

HOUSING

- Polycarbonate material and waterproof design suitable for wet location
- Plastic enclosure with flame retardant
- Compact and decorative design, single and double face configuration available
- Exit letter 6" height and 3/4" stroke, snap in and snap out direction indicator



ELECTRICAL

- 120/277VAC dual voltage operation
- Brownout circuit protection for ST/ SD fixture
- Battery low voltage protection
- Solid State transfer circuit
- Test switch and battery charging indicator
- Maintenance free Ni-cad battery
- 24 hours recharge, more than 90 minutes discharge

MOUNTING

- Suitable for wall mounting and side mounting
- Universal J-Box mounting pattern on back plate

BATTERY

- High temperature type Ni-cad battery
- Battery have to recharge if product keep in stock 9 months
- Detail manual refer "BATTERY STOCK AND RECHARGE GUIDELINE".

OPTIONS

- Self-testing and self-diagnostics optional
- Red and Green color exit sign optional
- Single face and Double face optional
- Remote capability 3.6V 1.5W Max optional (for constant output head, remote capability 0.75W Max)
- LynxEM® Wireless testing and reporting system available

ILLUMINATION

- Long life red or green LED lamps provide uniform exit sign illumination
- Basic model deliver 300lm output
- RC model deliver 180lm output

WARRANTY

- See [Limited Warranty Policy](#) for more additional information

CODE COMPLIANCE

- UL listed and meets or exceed all requirement in NFPA 70, NFPA 101 life safe code, suitable for USA market
- Suitable for 0°C to 50°C ambient temperature, Suitable wet location
- CL option with heater pad Ta range 25°C to 50°C, suitable for wet and cold location
- Compliant CEC title 20 efficiency regulations

RELATED PRODUCTS

- [WMU Series](#)
- [WSU Series](#)
- [EXL-700 Emergency Lighting](#)
- [EXL-1960 Emergency Lighting](#)

ORDER INFORMATION: EXAMPLE: WCU-G-ZD-WH-U-1

WCU	EXIT SIGN		OPTION		HOUSING COLOR		OPTION		INPUT VOLTAGE	
WCU Waterproof combo	R	Red color, Single face	BLACK	Manual test	WH	White	U	Extra one more exit panel for single face and double face universal	1	120/ 277V
	G	Green color, Single face	CT	Self-testing/ Self-Diagnostics	BK	Black				
			RC	Remote Capability						
			CL	Suitable for cold location						
			ZD	Wireless Reporting LynxEM® Control						

Project Name:	
Type:	

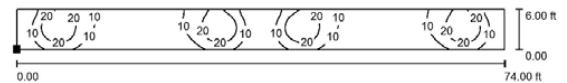
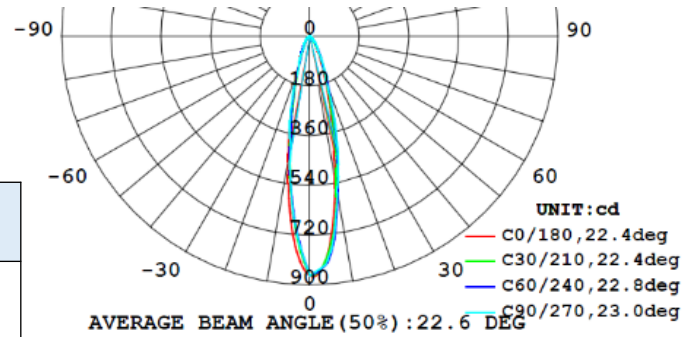
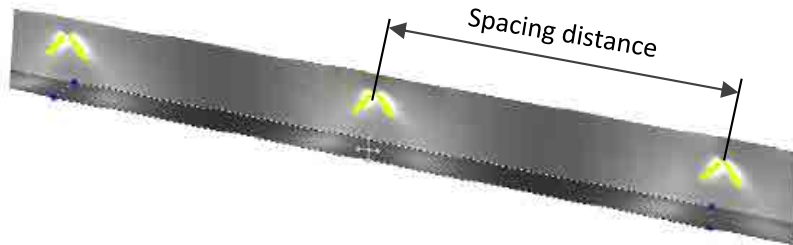
WCU Series

Suitable for Wet location
Wireless Reporting Compatible

PHOTOMETRIC

MODEL	LUMEN OUTPUT	SPACING DISTANCE WALL MOUNT 7.5FT HEIGHT	SPACING DISTANCE WALL MOUNT 10FT HEIGHT
WCU	300LM	40FT	37FT
WCU	180LM	26FT	22FT

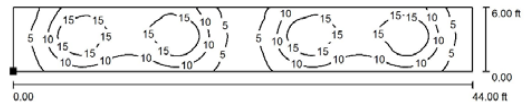
Compliant NFPA 101 requires 1.0 foot-candle average and 0.1 foot-candle minimum with a 40:1 maximum/ minimum ratio. 6 feet wide path of egress. The reflectance are 70% ceiling, 50% walls and 20% floors.



Position of surface in room:
Marked point: (-7.000 ft, 0.000 ft, 0.000 ft)

Grid: 128 x 32 Points

E_{av} [lx] 11 E_{min} [lx] 1.72 E_{max} [lx] 30 u0 0.156



Position of surface in room:
Marked point: (8.000 ft, 0.000 ft, 0.000 ft)

Grid: 128 x 32 Points

E_{av} [lx] 11 E_{min} [lx] 2.57 E_{max} [lx] 18

REMOTE HEAD



RM-S*2pcs

- Single remote head, 3.6V 0.75 delivers 85lm per unit
- Operation temperature range 0°C... + 50° suitable for damp location
- UL, cUL listed



VR660 ENCLOSURE FOR RM-S, RM-D

- Polycarbonate plastic suitable for outdoor use
- Waterproof design



RM-D*1pc

- Dual remote heads, 3.6V 1.5W
- Deliver 170lm per unit
- Operation temperature range 0°C... + 50° suitable for damp location
- UL, cUL listed



WEXH-900L-0.7W*1pcs

- Single remote head, dc3-12V input, 0.75W constant power
- Operation temperature range -25°C... + 50° suitable for damp location
- UL, cUL listed

PACKAGING

QTY : 4 PCS
N.W : 9.6 KGS
G.W : 10.9 KGS
MEA'S : 1.9 CUFT

