

Project Name:	
Type:	

# WPL01 Series

Slim LED Wall Pack  
Wireless Reporting Compatible

## PRODUCT FEATURE

### HOUSING

- Architectural, low profile decorative design.
- Die-cast aluminum housing with efficient heat sink.
- Enclosure rated IP65 per IEC 60529, suit for outdoor use.
- UV resistant polycarbonate lens.
- Universal pattern knockouts on back plate for junction box.
- 1/2" threaded conduit access on top surface.
- Black, white, dark bronze, silver UV resistant powder paint finish.



### ELECTRICAL

- AC 120-277V 60Hz operation, class 2 driver.
- Switching power circuit with high power factor and efficiency.
- Test switch and charge indicator.
- Long-life, maintenance-free, rechargeable Ni-Cad battery.
- 24 hours recharge after 90 minutes discharge.

### MOUNTING

- Suitable for wall mount and conduit mount

### LISTING

- UL and cUL listed and meets or exceeds all requirements in NFPA 70, NFPA 101 life safety code, suitable for U.S.A and Canada market.
- AC model (general lighting) DLC listed.
- RoHS compliant.

### OPTIONS

- ZD: LynxEM Wireless Report
- CT: self-testing/self-diagnostics
- LED CCT: cold white, 5000K, neutral white, 4000K, warm white, 3000K, cold white and warm white are standard CCT.
- Unit suitable for damp or wet location.
- AC unit Ta range -25°C - 50°C
- CL option with heater pad Ta range -25°C - 50°C suitable for cold weather.
- PIR option and photocell for energy saving.

### WARRANTY

- See [Limited Warranty Policy](#) for more additional information

### RELATED PRODUCTS

- [WEDL-901 Outdoor Deco](#)
- [SCEL8000 Emergency light](#)
- [C4 Series](#)
- [S1 Series - Exit Sign](#)

## ORDER INFORMATION: EXAMPLE: WPL01-C-ACEM-BLANK-ZD-CL-WH

WPL01	-	-	-	-	-	-
MODEL	LED CCT	OPERATION	SENSOR	TEST FACILITY (FOR EM ITEM)	HEAD PAD (FOR EM ITEM)	HOUSING COLOR
WPL01	<b>C</b> Cold white, 5000K <b>N</b> Neutral white, 4000K <b>W</b> Warm white, 3000K	<b>ACEM</b> General lighting and emergency <b>AC</b> General lighting	<b>BLANK</b> Photo sensor <b>PIR</b> Photo sensor and PIR sensor	<b>BLANK</b> Manual test <b>CT</b> Self-testing/ Self-diagnostics <b>ZD</b> Wireless Reporting LynxEM® Control	<b>BLANK</b> No heat pad <b>CL</b> With heat pad For cold weather	<b>AL</b> Silver <b>BK</b> Black <b>DB</b> Dark bronze <b>WH</b> White

# WPL01 Series

Slim LED Wall Pack  
Wireless Reporting Compatible

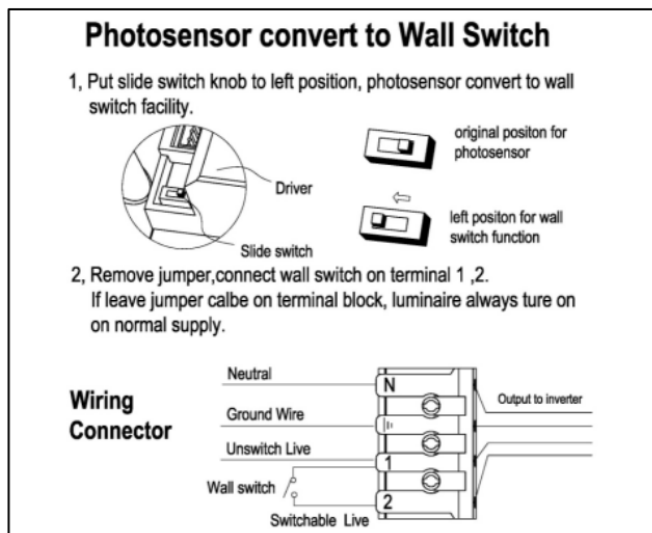
## LUMINAIRE ON AND OFF CONTROL FACILITY

There are 2 versions fixture with different ON/OFF control facility at normal AC supply.

### 1. Standard(Photocell only) version, luminaire on/off control by photocell.

If ambient Illuminaon < 10 lux, luminaire turn on automaticall, if Illuminaon > 30 lux, luminaire turn off.

Photocell facility can change to Wall switch control by below instrucon.



Project Name:	
Type:	

### 2. Photosenor & PIR verison fixture, luminaire control by photocell& PIR.

If ambient Illuminaon < 10 lux , in addion PIR sensor detect human move, luminaire will stay on 1 minute, if PIR sensor do not detect human move, luminaire stay off.

If ambient Illuminaon > 30 lux, luminaire turn off.

PIR detect radius

INSTALLATION HEIGT	RATED DETECT RADIUS
9FT	6.5FT
10FT	8.2FT
11FT	9.8FT

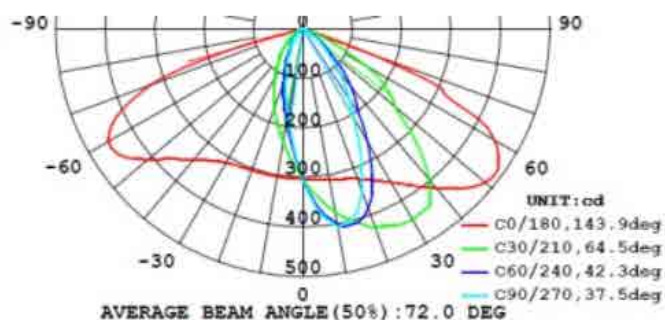
### Function disable instrucon

If need disable PIR function, need add one resistor 00mh 2512 pack on PCBA, then luminaire just have photocell function.

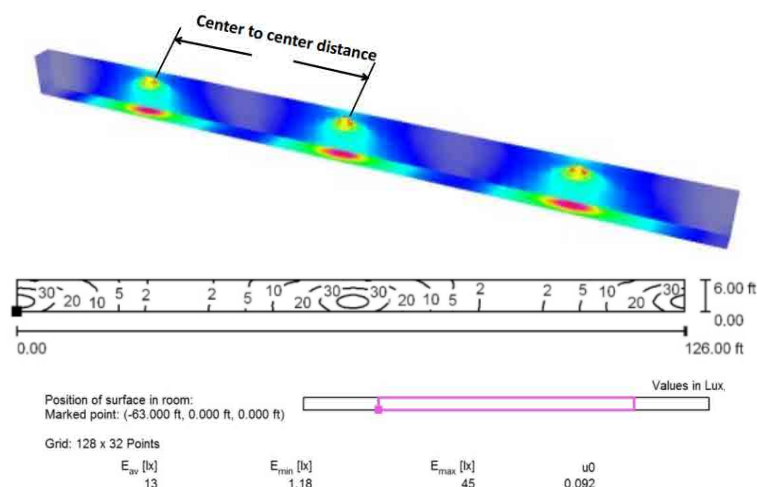
If need disable photocell but keep PIR function, just disconnect photocell PCBA.

**If normal supply fail, luminaire with ACEM function will convert to emergency mode automaticall.**

## EMERGENCY MODE (ACEM MODEL 600LM OUTPUT)



MOUNTING HEIGHT	CENTER TO CENTER DISTANCE
9FT	60FT
10FT	63FT
11FT	65FT

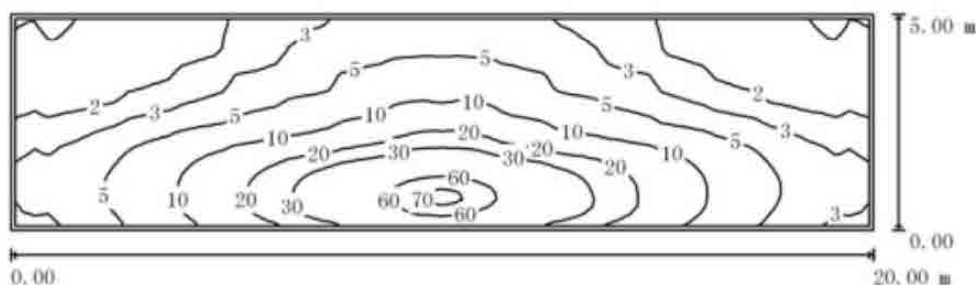
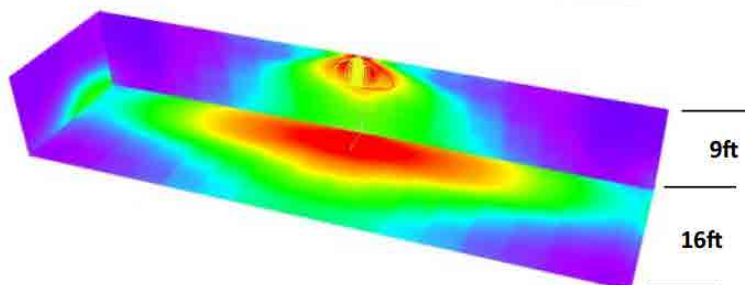
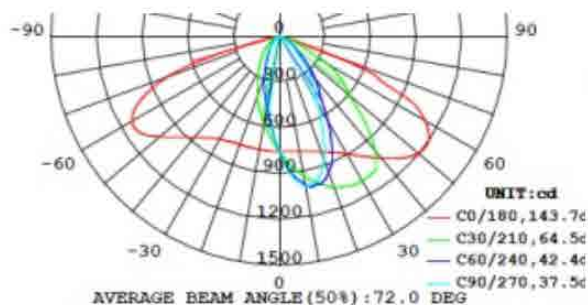


NFPA 101 requires 1.0 foot-candle average and 0.1 foot-candle minimum with a 40:1 maximum/minimum ratio.

# WPL01 Series

Slim LED Wall Pack  
Wireless Reporting Compatible

## AC MODE



## PACKAGING

