

Project Name:	
Type:	

# C3 Series

Exit Sign and Combo

## PRODUCT FEATURE

### HOUSING

- Injection-molded thermoplastic housing
- Plastic enclosure with 5VA flame retardant
- Compact and decorative design
- Friendly configuration design for quick installation
- EXIT letter 6" height and 3/4" stroke, snap in and snap out direction indicator
- Fully rotatable lamps head easy snap in housing
- Black color optional

### ELECTRICAL

- 120/277VAC 60Hz dual voltage input optional
- Brownout circuit protection for ST/SD fixture
- Battery low voltage protection
- Solid-state transfer circuit
- Test switch and battery charging indicator
- Maintenance free Ni-cad battery
- 24 hours recharge, more than 90 minutes discharge

### ILLUMINATION

- Long-life red or green LED lamps provide uniform diffuser illumination
- Standard model lamp head DC3.6V 0.73W, deliver 150lm from whole unit, CCT 5300K - 6000K
- HO model lamp head DC 3.6V 1.2W, deliver 250lm from whole unit, CCT 5300K - 6000K

### MOUNTING

- Suitable for wall mounting, ceiling mounting and side mounting
- Universal J-box mounting pattern on back plate



### OPTIONS

- Basic model with manual test switch and indicator
- RC option with 3.6V 1.5W remote capability
- Self-testing and Self-diagnostic optional
- Red and green color EXIT sign optional
- LynxEM® Wireless testing and reporting system are available.

### CODE COMPLIANCE

- UL listed and meets or exceed all requirement in NFPA 70, NFPA 101 life safety code, suitable for USA market
- Compliant CEC title 20 efficiency regulations
- Suitable for 10°C - 40°C ambient temperature, suitable for damp location

### RELATED PRODUCTS

- [C1 Series - Exit Sign Combos](#)
- [C2 Series - Exit Sign Combos](#)
- [C4 Series - Exit Sign Combos](#)
- [C5 Series - Exit Sign Combos](#)

### WARRANTY

- See [Limited Warranty Policy](#) for more additional information

## ORDER INFORMATION: EXAMPLE: C3-G-RC-BLANK-B-1

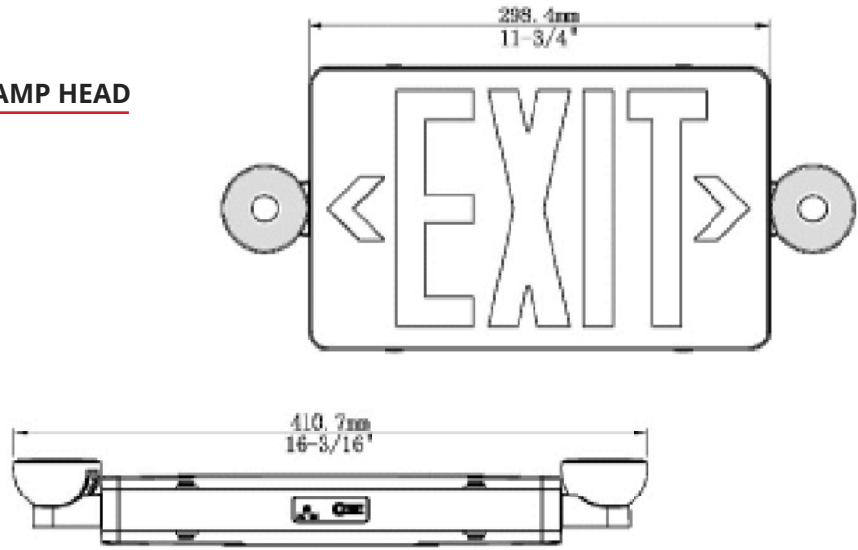
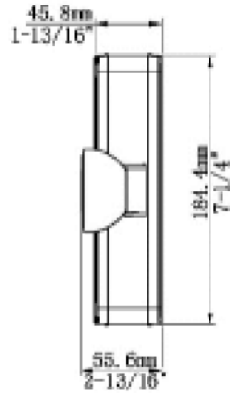
MODEL	LEGEND	OPTION	TEST FACILITY	HOUSING COLOR	INPUT VOLTAGE
<b>C2 Series</b>	<b>R</b> Red color <b>G</b> Green color	<b>BLANK</b> Basic model <b>HO</b> High lumen output <b>RC</b> Remote capability	<b>BLANK</b> Manual test <b>CT</b> Self-testing/ Self-diagnostics <b>ZD</b> Wireless Reporting LynxEM® Control	<b>W</b> White <b>B</b> Black	<b>1</b> 120/ 277VAC

Project Name:	
Type:	

# C3 Series

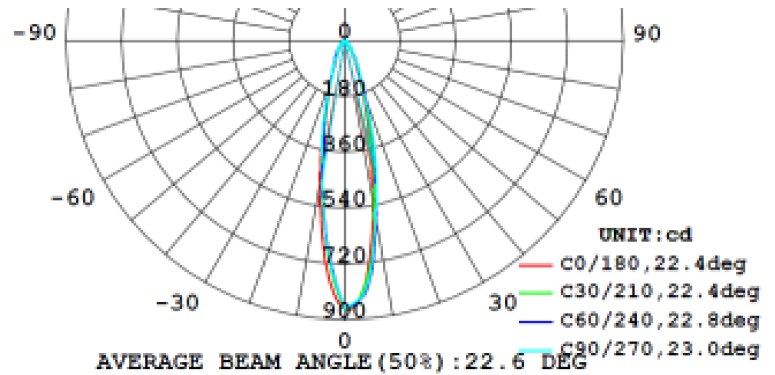
Exit Sign and Exit Combo

## DIMENSION AND FULLY RETATIONAL LAMP HEAD



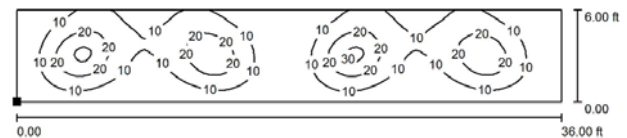
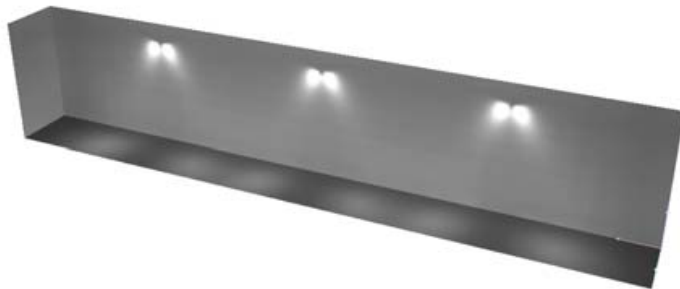
## PHOTOMETRIC

MODEL	LUMEN OUTPUT	SPACING DISTANCE WALL MOUNT 7.5FT HEIGHT	SPACING DISTANCE WALL MOUNT 10FT HEIGHT
C3	150lm	20FT	18FT
C3-HO	250lm	32FT	30FT



Compliant NFPA 101 requires 1.0 foot candle average and 0.1 foot candle minimum with a 40:1 maximum/ minimum ratio

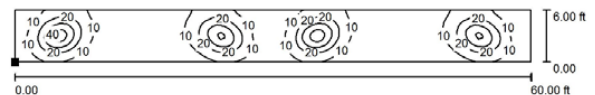
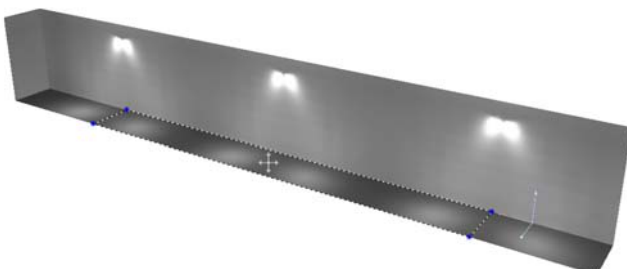
Normal model, 150lm output



Grid: 128 x 32 Points

$E_{av}$ [lx]	$E_{min}$ [lx]	$E_{max}$ [lx]	$u0$
12	3.25	32	0.276

High lumen output model, 250lm output



Grid: 128 x 32 Points

$E_{av}$ [lx]	$E_{min}$ [lx]	$E_{max}$ [lx]	$u0$
12	1.88	46	0.161

Project Name:	
Type:	

# C3 Series

Exit Sign and Exit Combo

## REMOTE HEAD



- RM-S**
- Single remote head, 3.6V 0.75W delivers 80lm per unit
  - Operation temperature range 0°C...+ 50°C suitable for damp location
  - UL, cUL listed



- RM-D**
- Dual remote head, 3.6V 1.5W delivers 170lm per unit
  - Operation temperature range 0°C...+ 50°C suitable for damp location
  - UL, cUL listed

## PHOTOMETRIC

MODEL / FEATURE	C3	C3 – CT
Brownout transfer	n/a	✓
Battery low voltage disconnect	✓	✓
Overload disconnect	n/a	✓
Short circuit load disconnect	n/a	✓
Solid State transfer	✓	✓

## PACKAGING

- QTY : 12 PCS  
N.W : 13 KGS  
G.W : 15 KGS  
MEA'S : 1.8 CUFT

