

Project Name:	
Type:	

EXL-660L

LED Emergency Light
Wireless Reporting Compatible

PRODUCT FEATURE

HOUSING

- Injection molded thermoplastic ABS housing
- Plastic enclosure with 5VA flame retardant
- Quick connector design for easy installation
- Two fully adjustable glare-free square shape light heads for emergency light



ELECTRICAL

- AC 120/277VAC dual voltage operation
- Test switch and charge rate indicator
- Self-test and Self-diagnostics function is available for battery backup model
- 3.6V long life, maintenance-free, rechargeable Ni-cad battery
- 24 hours recharge after 90 minutes discharge

MOUNTING

- Suitable for wall mount and ceiling mount
- Top and side knockout for conduit applications

ILLUMINATION

- SMD high power LED, CCT 6000K, L70 35,000 hours
- 1 watts high power LED per head for standard mode, fixture provide 150lm on initial discharge
- 2 watts high power per head for high lumen model, fixture provide 250lm on initial discharge

LISTING

- Suitable for use in 10°C - 40°C ambient temperature, suitable for damp location
- UL listed meets or exceed all requirement in NFPA 70, NFPA 101 life safe code
- Compliant CEC title 20 efficiency regulations

OPTIONS

- CT option with self-testing and self-diagnostics
- RC option with 3.6V 3W max remote capability
- ZD option with Wireless testing and Reporting function
- Multi voltage option with 220-240VAC 50Hz input

WARRANTY

- See [Limited Warranty Policy](#) for more additional information

RELATED PRODUCTS

- ↻ [EXL-1960 Emergency Light](#)
- ↻ [EXL-660 Emergency Light](#)
- ↻ [WEXH-900L & 910L Emergency Light](#)
- ↻ [WMU Series Wet & Cold location](#)

ORDER INFORMATION: *EXAMPLE: EXL-660L-W-HO2RC-ZD-B-3*

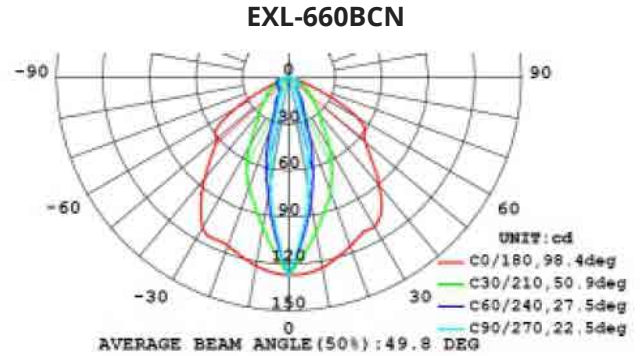
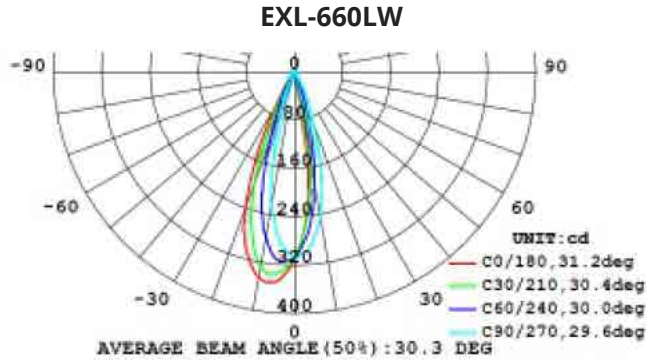
EXL-660L	-		-		-		-		-				
MODEL	LENS		LUMEN OUTPUT & REMOTE CAPABILITY			TEST FACILITY		HOUSING COLOR		VOLTAGE			
EXL-660L	W	General lens	BLANK	Standard lumen output, w/o remote capability			BLANK	Manual test		W	White	1	120/277V
	N	Narrow lens	2RC	Standard lumen output, with 3.6V 1.5W remote capability			CT ZD	Self-testing/ Self-diagnostics Wireless Reporting LynxEM® Control		B	Black	3	220-240(1)
			4RC	Standard lumen output, with 3.6V 2.5W remote capability									
			HO	High lumen output, w/o remote capability									
		HO2RC	High lumen output, with 3.6V 1.5W remote capability										

EXL-660L

LED Emergency Light
Wireless Reporting Compatible

PHOTOMETRIC

LUMINOUS INTENSITY DISTRIBUTION (Single head)



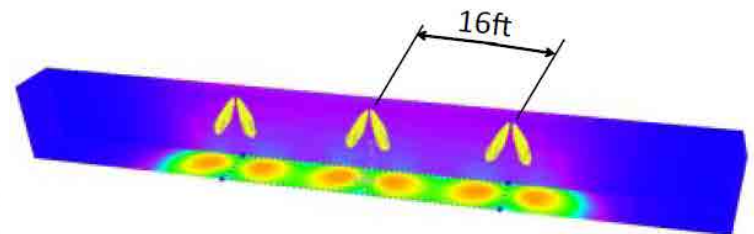
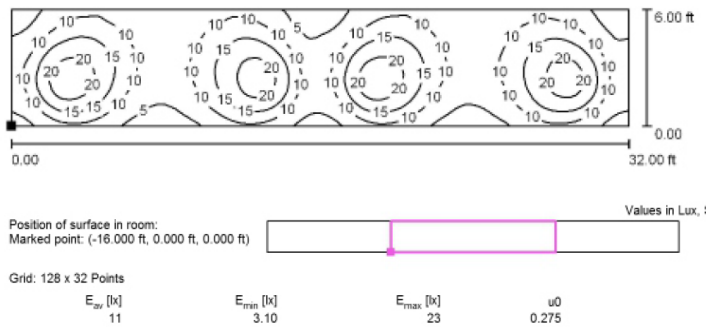
CENTER TO CENTER SPACING

NFPA 101 requires 1.0 foot-candle average and 0.1 foot-candle minimum with a 40:1 maximum/ minimum ratio. The corridor used is 100 feet long, 9 feet ceiling with a 6 feet wide walkaway and 3 feet path of egress. The reflectance are 80% ceiling, 50% walls and 20% floors. The fixture mounting height is 7.5 feet.

MODEL	LUMEN OUTPUT	SPACING DISTANCE 6FT PATH OF EGRESS	SPACING DISTANCE 3FT PATH OF EGRESS
EXL-660LW	150 lm	16 feet	20 feet
EXL-660LW-HO	360 lm	24 feet	28 feet
EXL-660LWLN	150 lm	16 feet	22 feet
EXL-660LW-HO	250 lm	25 feet	32 feet

ILLUMINANCE CALCULATE DATA

EXL-660LW, 6FT WIDE CORRIDOR, 6FT PATH OF EGRESS



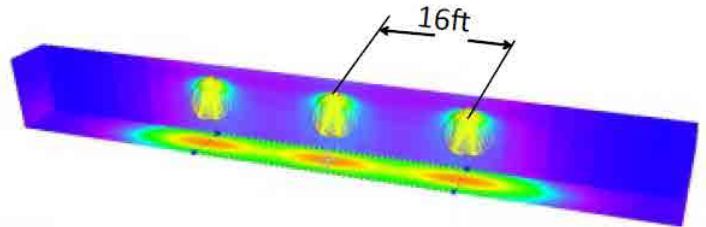
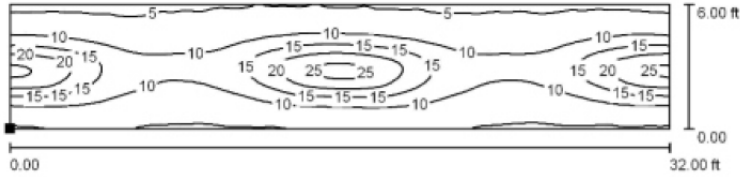
Project Name:	
Type:	

EXL-660L

LED Emergency Light
Wireless Reporting Compatible

ILLUMINANCE CALCULATE DATA

EXL-660LN, 6FT WIDE CORRIDOR, 6FT PATH OF EGRESS



Position of surface in room:
Marked point: (-16.000 ft, 0.000 ft, 0.000 ft)

Grid: 128 x 32 Points

E_{av} [lx]	E_{min} [lx]	E_{max} [lx]	$u0$
11	4.33	27	0.409

ILLUMINANCE CALCULATE DATA

EXL-660LN, 6FT WIDE CORRIDOR, 6FT PATH OF EGRESS



EXH-661W-1W

- Single remote head, 3.6V, 1W delivers 55lm per unit
- Operation temperature range 0°C...+ 40°C suitable for damp location
- UL, cUL listed



EXH-662W-1W

- Dual remote head, 3.6V, 2W delivers 110lm per unit
- Operation temperature range 0°C...+ 40°C suitable for damp location
- UL, cUL listed



RM-S

- Single remote head, 3.6V, 0.75W delivers 85lm per unit
- Operation temperature range 0°C...+ 50°C suitable for damp location
- UL, cUL listed



RM-D

- Dual remote head, 3.6V, 1.5W delivers 170lm per unit
- Operation temperature range 0°C...+ 50°C suitable for damp location
- UL, cUL listed

PACKAGING

Q'TY	:	12 PCS
N.W	:	5.50 KGS
G.W	:	6.50 KGS
MEA'S	:	0.75 CUFT

